



SERAI  
OCEAN DREAM

# SERAI

OCEAN DREAM

An ocean week,  
*unhurried.*

A 41-metre private motor yacht in the waters of the Maldives — ten staterooms, a full crew, and a week shaped around the light, the tides, and the mood on board.

41 M ♦ 10 STATEROOMS ♦ UP TO 20 GUESTS

**THE VESSEL**

## A private motor yacht, Built for unhurried times at sea.

SERAI Ocean Dream is a 41-metre live-aboard motor yacht cruising the home atolls of the Maldives — Greater Malé and Central Maldives throughout Ari, Vaavu & Kaafu Atolls with extended passages arranged on request.

Four decks, ten staterooms and a crew of fifteen support a complete ocean week: full board, house wines and beers at dinner, the support fleet, guided snorkeling and PADI instructors aboard are all part of the daily rate. What varies is the shape of the week — drawn around the light, the tides, and the mood on board.

Days unfold without schedule. A morning on the sandbank, an afternoon of snorkeling, a private sunset at anchor, a long dinner on the aft deck. The Maldivian waters changes every day; our itineraries move with it.

**LENGTH****41<sub>M</sub>****STATEROOMS****10****GUESTS****20****CREW****13**

## THE SPECIFICATIONS

# Engineering, Held quietly out of view.

### THE VESSEL

YEAR BUILT	2026
LENGTH (LOA)	41 m / 134.5 ft
BEAM	11 m
DRAFT	3 m
HULL & DECK	Full fiberglass hull, teak deck flooring
DECKS	Four – Sun, Upper, Main, Lower
CRUISING SPEED	10 knots (max 16)
MAIN ENGINE	Caterpillar C32 – 1,300 HP
GENERATORS	Caterpillar 1 x 40kW + 2 x 70kW
FRESH WATER	36-ton RO plant, 11-ton Storage
HOT WATER	300 L boiler system
FUEL CAPACITY	11 tonnes

### THE SUPPORT FLEET

SERAI DIVE	20 m dive tender, 20 PAX, Caterpillar 420 HP, Full ScubaPro dive equipment, BAUER Nitrox compressors
SERAI SPEED	8 m Speedboat, 250 HP YAMAHA, Wet Sound System, Fishing Equipments
SERAI WAVE (TENDER)	7 m tender, 60 HP YAMAHA, Equipment & Personnel Transfers

### ONBOARD SERVICES

CONNECTIVITY	Starlink WiFi – Unlimited, High-speed
CLIMATE	Full air conditioning throughout
LAUNDRY	Full onboard services – Wash, Dry, Press
TRANSFERS	Velana International Airport (Hulhule') Included



FOUR DECKS

# The vessel in four chapters.

Each deck holds its own pace- the Sun Deck for evenings under the stars; the Upper Deck for its panoramic estate suites and open-air practice; the Main Deck for gathering; the Lower Deck, private quarters.

- IV

## Sun Deck

Jacuzzi with ocean views · in-built sun beds and relaxation sofas · fusion DJ floor for evenings · coffee lounge · dedicated yoga and meditation area · outdoor cinema with retractable screen for open-air film nights.

- III

## Upper Deck

Advanced navigation bridge · two Estate Suites — Marlin & Manta — with massage chairs and panoramic views · outdoor dining and lounge · open-air yoga space · indoor/outdoor fitness centre · spa treatment room.

- II

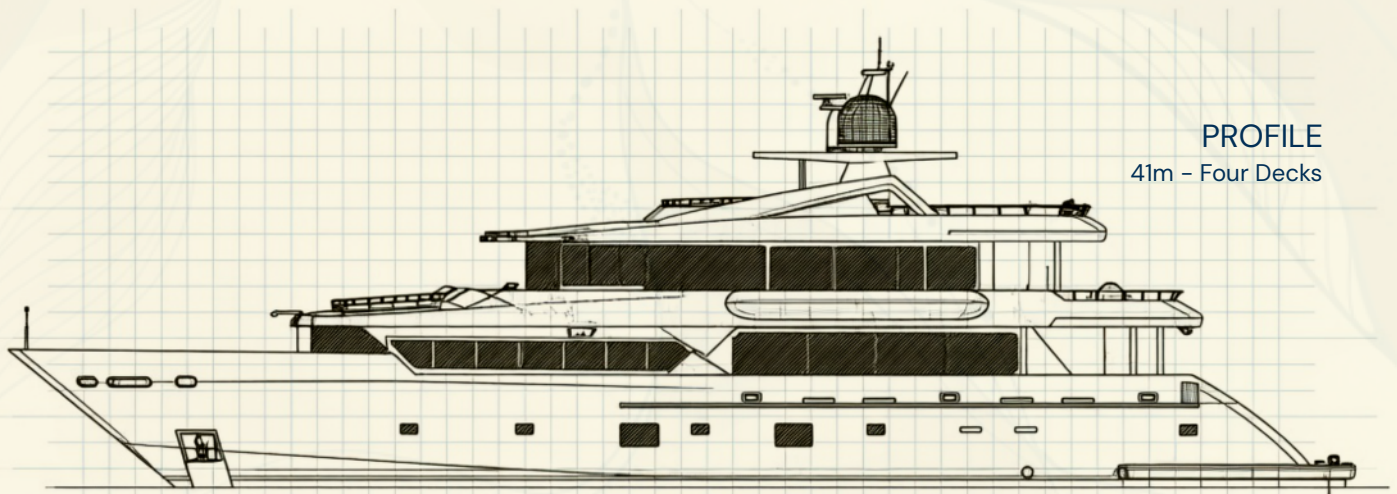
## Main Deck

Spacious salon and lounge · indoor and outdoor dining · full commercial galley · premium bar with wine cellar and beer chiller · two Deluxe twin cabins · kids' gaming area · the signature Manta Ray artwork (16,000 screws — First Place, Maldives Art Exhibition).

- I

## Lower Deck

Six guest cabins — two Master Suites, two Super Deluxe Double Twins, two Deluxe Single Twins · engine and control rooms · full laundry · water-sports equipment storage · crew quarters (10 berths).



PROFILE  
41m - Four Decks

#### IV

## Sun Deck



The highest point on board, and the quietest. A whirlpool set into the teak, shaded loungers, and open water in every direction — the place the day tends to end, or never quite begins.





### III

## Upper Deck



Dining moves up here when the evening is right for it: a long table under cover, the reef on three sides, the lights of Malé in the distance. The 2 Estate Suites open off this level, each with its own outlook over the water.



## II Main Deck



The social heart of the yacht — shaded lounging, the bar within reach, and a threshold that opens straight onto the sea. Somewhere to gather, or to be left alone with the view.





## Lower Deck



6 of the 10 staterooms sit on this level, from the 2 Master Suites forward to the deluxe twins — each finished in the same restrained palette, each a few steps from the water.

**TEN STATEROOMS**

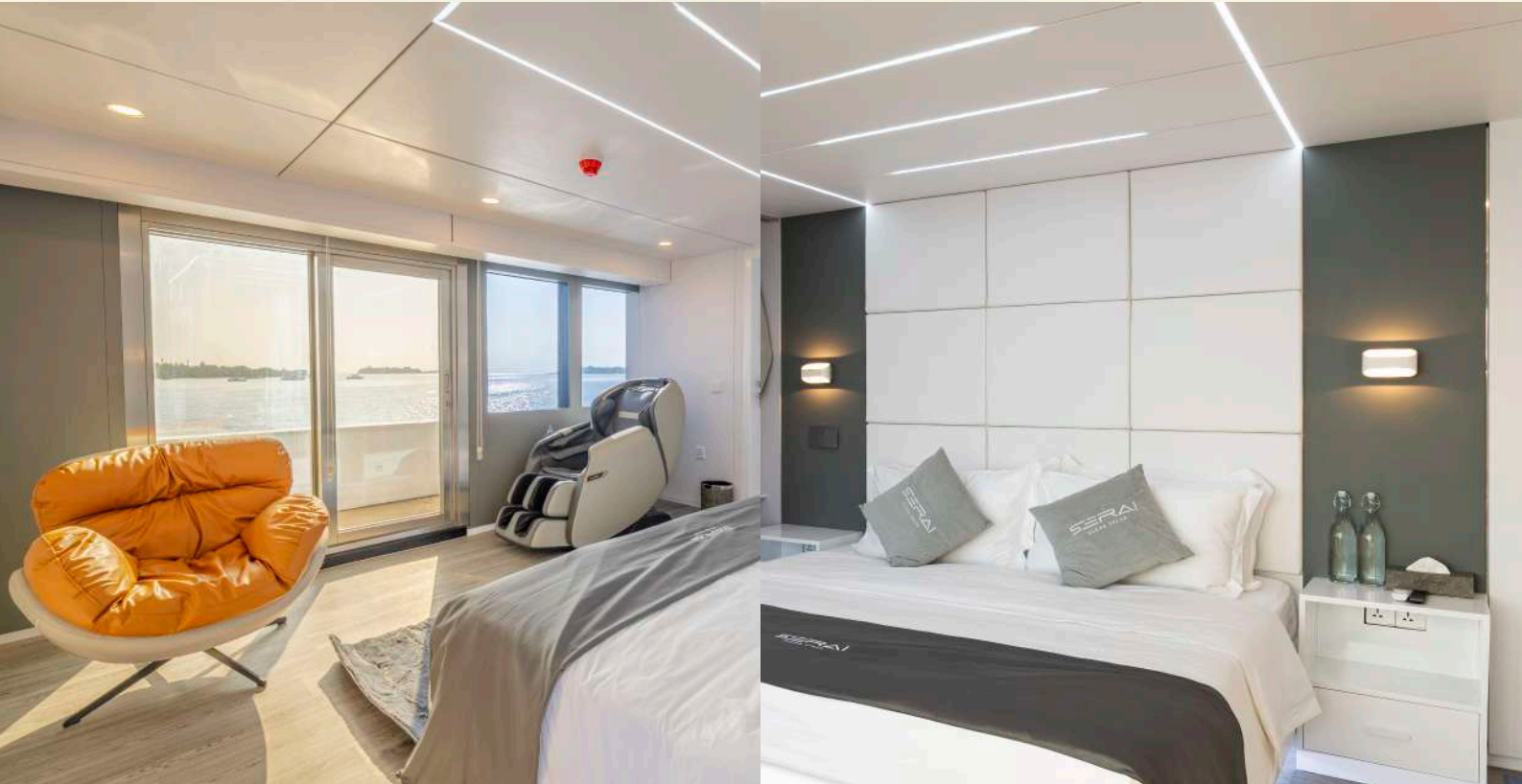
## Ten rooms. Each named for the sea.

Every stateroom is fully en-suite, with individual climate control, blackout treatments, premium linens and a considered amenity set. The two upper-deck Estate Suites are the signature accommodation — private massage chairs, panoramic ocean views, and the most generous footprint on board.

No.	Category	Configuration	Suite	Deck
109	Estate Suite	King	Marlin Estate	Upper
110	Estate Suite	King	Manta Estate	Upper
101	Master Suite	King	Octopus Suite	Lower
102	Master Suite	King	Whale Shark Suite	Lower
103	Super Duplex	Double Twin	Serai Dolphin	Lower
104	Super Duplex	Double Twin	Serai Mahi Mahi	Lower
105	Deluxe	Single Twin	Triggerfish Deluxe	Lower
106	Deluxe	Single Twin	Seahorse Deluxe	Lower
107	Deluxe	Single Twin	Turtle Deluxe	Main
108	Deluxe	Single Twin	Tuna Deluxe	Main

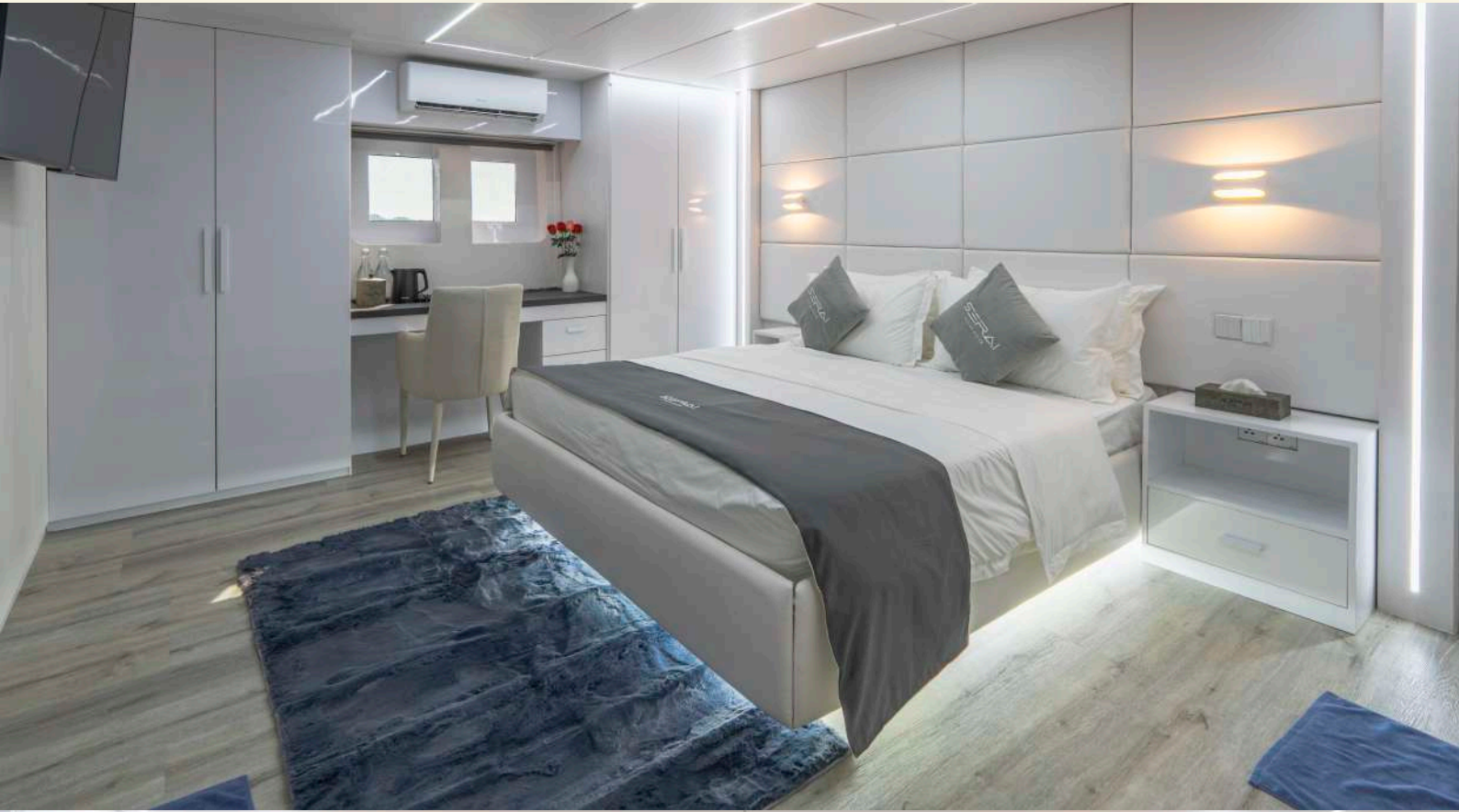
**ESTATE CLASS**

Two upper-deck suites with massage chairs and panoramic views – the most generous footprint aboard.



**MASTER CLASS**

Two fully private king-bedded suites on the Lower Deck, finished to the same specification.



**SUPER DELUXE & DELUXE**

Six en-suite twin cabins across Lower and Main Decks  
— flexible configurations for families and groups.



## FACILITIES 7 EXPERIENCE

# A week of ocean, In its many moods.

### WELLNESS

## Spa · Fitness · Yoga

A dedicated spa treatment room on the Upper Deck, a combined indoor-outdoor fitness centre, and two open-air yoga spaces — shaded on the Upper Deck, exposed on the Sun Deck. Private instructor sessions on request.

### DIVING

## PADI · All Levels

Full ScubaPro equipment aboard the dedicated Serai Dive support boat BAUER Nitrox compressors — Diving packages from Discover Scuba to Professional diving sessions in notable reefs and diving zones.

### ENTERTAINMENT

## Cinema · DJ · Play

An open-air Sun Deck cinema with retractable screen, surround audio, PlayStation 5 and Netflix. A fusion DJ floor for evenings, karaoke and live-music setups, and indoor games for quieter hours.

### DINING

## Asian & Western · Pastry & Bakery

A single onboard kitchen serving refined Asian and Western menus with dedicated pastry and bakery work. Signature settings include outdoor deck dining, sandbank barbecue, and private sandbank lunch.

### WATER SPORTS

## Motor & Non-motor

Kayaks, paddle-boards, inflatable water jumper, platform pool, water slide, floating trampoline — alongside jet skis, jet car, wakeboard and banana boat. Guided snorkeling daily with the cruise director.

### CREW

## Thirteen Dedicated Yacht Crew

Eleven yacht crew and Two dive-boat crew — captain, executive chef, dive master and cruise director among them. International maritime certification; discreet, personalized service grounded in local knowledge.

THE CREW

# The people behind the passage.

## Deck & Navigation



CAPTAIN  
**Ahmed Sobah**

ASST. CAPTAIN  
**Assad Hassan Rasheed**

DECK HAND  
**Aiyub Ali**

MAINTENANCE OFFICER  
**Rahed Mia (Kokko)**

## Galley & Bar



HEAD CHEF  
**Mahesh**

SOUS CHEF  
**Habib**

BARTENDER  
**Sirey**

STEWARD  
**Oppo**

## Interior & Hospitality



STEWARD  
**RUBEL**

STEWARD  
**SOHEL**

## The Charter Collection

*The Maldives changes everyday,  
And our itineraries move with the light, the tides,  
and the mood onboard*

### Six Voyages · One Vessel

Visit [seraiocream.com](https://seraiocream.com) to explore our latest charter packages.  
Our itineraries can be customize for your preferences.

You can contact us regarding private charter itineraries  
at [reservations@seraiocream.com](mailto:reservations@seraiocream.com)



## A SAMPLE WEEK

# Seven days, Drawn lightly.

A shape for the week, not a schedule. The rhythm shifts with weather, light and the party aboard. What follows is an illustration of how a Signature Seven might unfold.

## ONE Arrival & Settle

Velana region transfer, welcome aboard, a slow first anchorage close to the city, canapés on the sun deck, an early dinner.

## TWO Into the house reefs

A short cruise into North Male', morning snorkel on a resident reef, afternoon in the pool and on the water toys.

## THREE Sandbank Day

A short cruise into North Male', morning snorkel on a resident reef, afternoon in the pool and on the water toys.

## FOUR Dive or Drift

Certified dives from the Serai Dive boat, or a long, slow snorkel; sunset drinks on the upper deck.

## FIVE South Male' Passage

Crossing into South Male' channels, a reef dive or a kayak morning, a beach barbecue on a quiet island.

## SIX At Leisure

A full day design around the group: Spa, wakeboard session, fishing tender out at first light - whatever the week has asked for.

## SEVEN The Last Morning

A slow breakfast, a final swim, transfer to Airport or a connecting resort.

## THE INVESTMENT

# Inclusivity & Additions

All rates are for the full vessel on a minimum seven-night basis. Longer stays, private extensions & bespoke variations are welcome on request.

Reach us directly at [reservations@seraiocream.com](mailto:reservations@seraiocream.com) to get a charter quote, or explore through our charter library at [library.seraiocream.com](http://library.seraiocream.com) to plan an itinerary and prepare for a voyage.

### Included

- ◆ Full Board – Breakfast, Lunch & Dinner
- ◆ House wine & Beer at dinner
- ◆ Soft drinks, Tea & Coffee
- ◆ All non-motorized water sports  
+ Kayaks + SUPs + Paddle Board + Trampoline
- ◆ Snorkeling equipment & guided excursions
- ◆ Sandbank visits & local island excursions
- ◆ Sandbank lunch and beach barbecue
- ◆ PADI dive instructor aboard
- ◆ Unlimited Starlink Wi-Fi
- ◆ Arrival & departure transfers to airport
- ◆ Outdoor Cinema\*
- ◆ PlayStation 5 & games\*
- ◆ Netflix in all en-suite rooms and salon
- ◆ Yoga mats & mini fitness area with gym equipments
- ◆ Fuel within standard operating region
- ◆ Water Slide & Pool on request\*
- ◆ Wakeboard Rides
- ◆ Fun tube & banana boat rides on request\*
- ◆ Tender onboard
- ◆ Occasional Celebrations and event preparation\*

### Additional

- |                            |                             |
|----------------------------|-----------------------------|
| ◆ Jet Ski                  | USD 550 / Day               |
| ◆ Spa Treatment            | USD 250 / Treatment         |
| ◆ Premium Spirits          | On Consumption              |
| ◆ Premium Wine & Champagne | On Consumption              |
| ◆ Dive Sessions            | On request*                 |
| ◆ Extended routes          | Fuel Surcharge, on request* |
| ◆ Additional Transfers     | Non-male' on request*       |

### Terms & Conditions

Applicable on operator net: TGST 17%, Service Charge 10%. Green Tax USD 12 per person per night.

\* Starred items are subject to weather conditions, current market rates, availability and other factors.

View the detailed terms & conditions for charters and particulars at [seraiocream.com](http://seraiocream.com)

**TO BEGIN**

**Write to us  
With your week.**

Charters are held on a first-deposit basis against the yacht calendar. Share your preferred week, the composition of your party, and which of the six voyages draws you. We will revert within one working day with a tailored proposal, a hold on the dates, and a draft plan for the week.

**CHARTERS**

[charters@seraiocream.com](mailto:charters@seraiocream.com)

**PHONE**

+(960) 777 0235

**REGISTERED OFFICE**

Ma. Kashmeeru Vaadhy,  
Male', Republic of Maldives

**RESERVATIONS**

[reservations@seraiocream.com](mailto:reservations@seraiocream.com)

**WEBSITE**

[seraiocream.com](http://seraiocream.com)

**OPERATING REGION**

Greater Male', South Male' & North Male'